



## MAXPOWER CS6U-320 | 325 | 330 | 335P

Canadian Solar's modules use the latest innovative cell technology, increasing module power output and system reliability, ensured by 15 years of experience in module manufacturing, well-engineered module design, stringent BOM quality testing, an automated manufacturing process and 100% EL testing.

### KEY FEATURES



Excellent module efficiency of up to 17.23 %



Outstanding low irradiance performance of up to 96.0 %



Heavy snow load up to 5400 Pa, wind load up to 2400 Pa



**linear power output warranty**



**product warranty on materials and workmanship**

### MANAGEMENT SYSTEM CERTIFICATES\*

ISO 9001:2008 / Quality management system

ISO 14001:2004 / Standards for environmental management system

OHSAS 18001:2007 / International standards for occupational health & safety

### PRODUCT CERTIFICATES\*

IEC 61215 / IEC 61730: VDE / CE / CQC / MCS / INMETRO / CEC AU

UL 1703 / IEC 61215 performance: CEC listed (US) / FSEC (US Florida)

UL 1703: CSA / IEC 61701 ED2: VDE / IEC 62716: VDE

UNI 9177 Reaction to Fire: Class 1

IEC 60068-2-68: SGS

Take-e-way

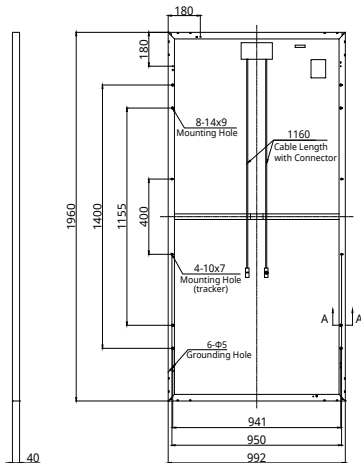


\* Please contact your local Canadian Solar sales representative for the specific product certificates applicable in your market.

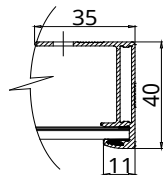
**CANADIAN SOLAR INC.** is committed to providing high quality solar products, solar system solutions and services to customers around the world. As a leading PV project developer and manufacturer of solar modules with over 20 GW deployed around the world since 2001, Canadian Solar Inc. (NASDAQ: CSIQ) is one of the most bankable solar companies worldwide.

## ENGINEERING DRAWING (mm)

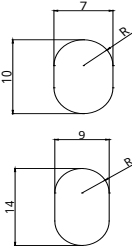
### Rear View



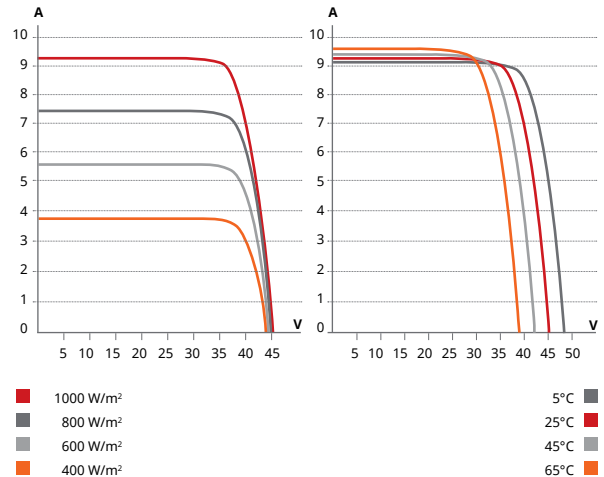
### Frame Cross Section A-A



### Mounting Hole



## CS6U-320P / I-V CURVES



## ELECTRICAL DATA | STC\*

CS6U	320P	325P	330P	335P
Nominal Max. Power (P <sub>max</sub> )	320 W	325 W	330 W	335 W
Opt. Operating Voltage (V <sub>mp</sub> )	36.8 V	37.0 V	37.2 V	37.4 V
Opt. Operating Current (I <sub>mp</sub> )	8.69 A	8.78 A	8.88 A	8.96 A
Open Circuit Voltage (V <sub>oc</sub> )	45.3 V	45.5 V	45.6 V	45.8 V
Short Circuit Current (I <sub>sc</sub> )	9.26 A	9.34 A	9.45 A	9.54 A
Module Efficiency	16.46%	16.72%	16.97%	17.23%
Operating Temperature	-40°C ~ +85°C			
Max. System Voltage	1000 V (IEC) or 1000 V (UL)			
Module Fire Performance	TYPE 1 (UL 1703) or CLASS C (IEC 61730)			
Max. Series Fuse Rating	15 A			
Application Classification	Class A			
Power Tolerance	0 ~ + 5 W			

\* Under Standard Test Conditions (STC) of irradiance of 1000 W/m<sup>2</sup>, spectrum AM 1.5 and cell temperature of 25°C.

## ELECTRICAL DATA | NMOT\*

CS6U	320P	325P	330P	335P
Nominal Max. Power (P <sub>max</sub> )	235 W	239 W	242 W	246 W
Opt. Operating Voltage (V <sub>mp</sub> )	33.9 V	34.0 V	34.2 V	34.4 V
Opt. Operating Current (I <sub>mp</sub> )	6.94 A	7.01 A	7.08 A	7.15 A
Open Circuit Voltage (V <sub>oc</sub> )	42.2 V	42.4 V	42.5 V	42.6 V
Short Circuit Current (I <sub>sc</sub> )	7.48 A	7.54 A	7.63 A	7.70 A

\* Under Nominal Module Operating Temperature (NMOT), irradiance of 800 W/m<sup>2</sup>, spectrum AM 1.5, ambient temperature 20°C, wind speed 1 m/s.

## PERFORMANCE AT LOW IRRADIANCE

Outstanding performance at low irradiance, with an average relative efficiency of 96.0 % for irradiances between 200 W/m<sup>2</sup> and 1000 W/m<sup>2</sup> (AM 1.5, 25°C).

The aforesaid datasheet only provides the general information on Canadian Solar products and, due to the on-going innovation and improvement, please always contact your local Canadian Solar sales representative for the updated information on specifications, key features and certification requirements of Canadian Solar products in your region.

Please be kindly advised that PV modules should be handled and installed by qualified people who have professional skills and please carefully read the safety and installation instructions before using our PV modules.

## MECHANICAL DATA

Specification	Data
Cell Type	Poly-crystalline, 6 inch
Cell Arrangement	72 (6 × 12)
Dimensions	1960 × 992 × 40 mm (77.2 × 39.1 × 1.57 in)
Weight	22.4 kg (49.4 lbs)
Front Cover	3.2 mm tempered glass
Frame Material	Anodized aluminium alloy
J-Box	IP68, 3 diodes
Cable	4 mm <sup>2</sup> (IEC) or 4 mm <sup>2</sup> & 12 AWG 1000V (UL), 1160 mm (45.7 in)
Connector	T4 series or PV2 series
Per Pallet	26 pieces, 635 kg (1400 lbs)
Per Container (40' HQ)	624 pieces

## TEMPERATURE CHARACTERISTICS

Specification	Data
Temperature Coefficient (P <sub>max</sub> )	-0.41 % / °C
Temperature Coefficient (V <sub>oc</sub> )	-0.31 % / °C
Temperature Coefficient (I <sub>sc</sub> )	0.053 % / °C
Nominal Module Operating Temperature (NMOT)	43±2 °C

## PARTNER SECTION

